

Research Committee

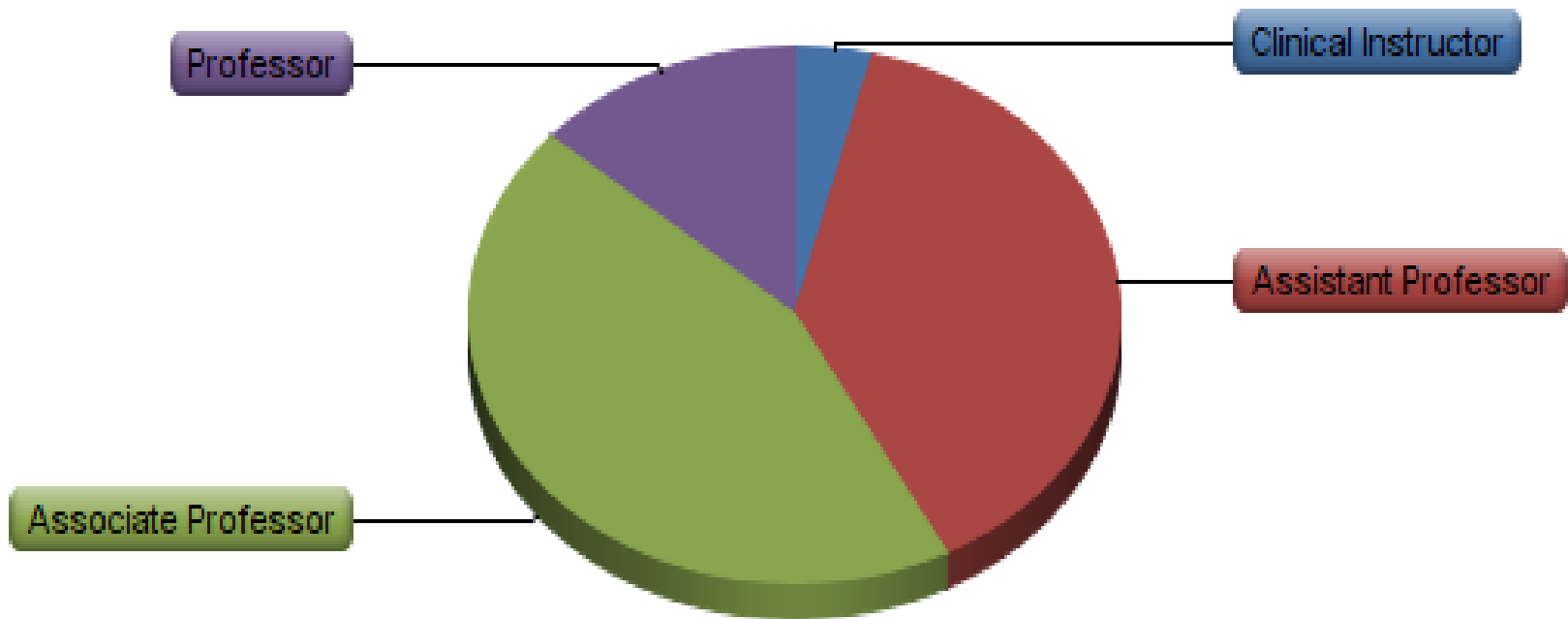
MPPDA

Medicine-Pediatrics Program
Directors Association

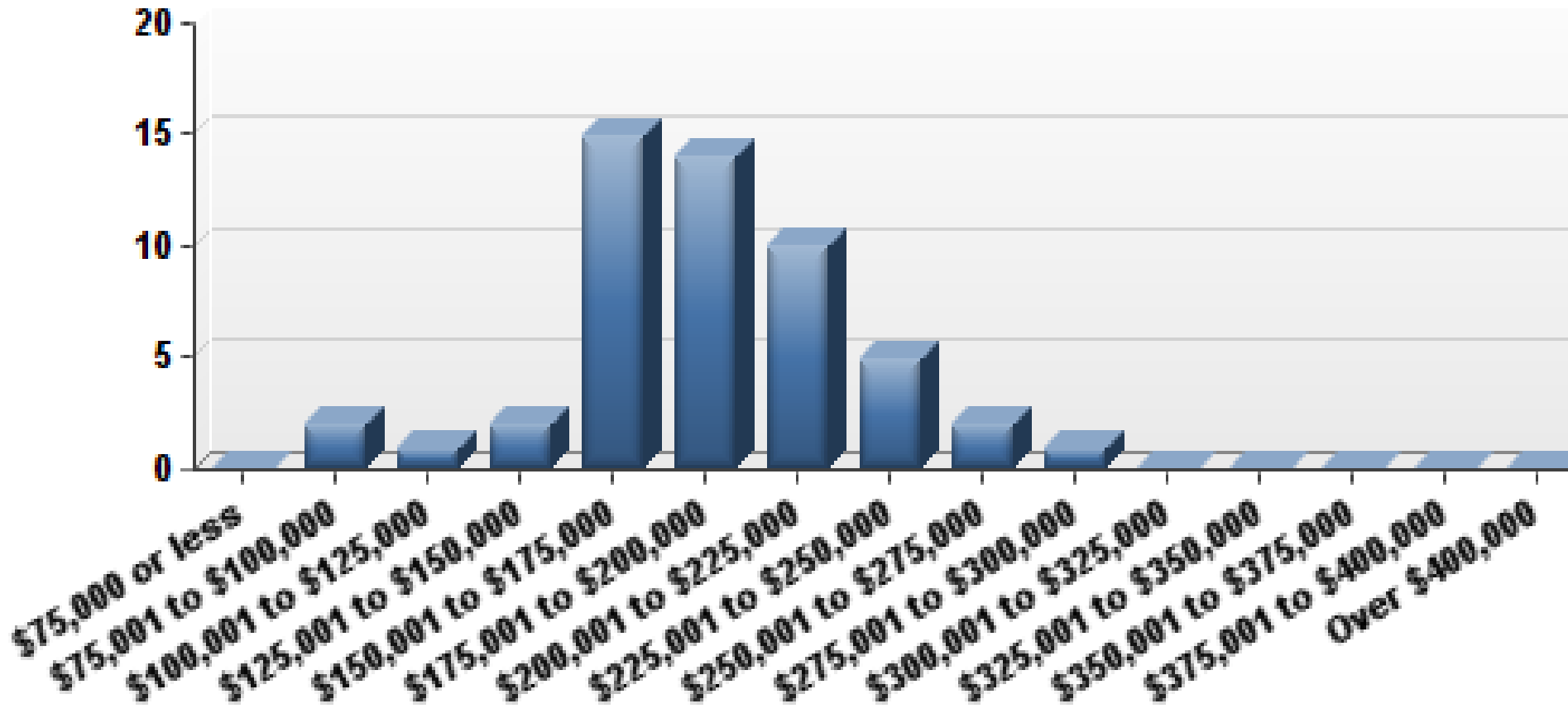
MPPDA Survey

- 53 out of 79 programs (67% of programs)
- Survey conducted in Feb 2016
- 69 questions! Took on average 15-20 minutes.
- Core:
 - Program Characteristics
 - Program Assessment/Accreditation,
 - Ambulatory Education
 - Recruitment
- Modules:
 - X+Y, Transition

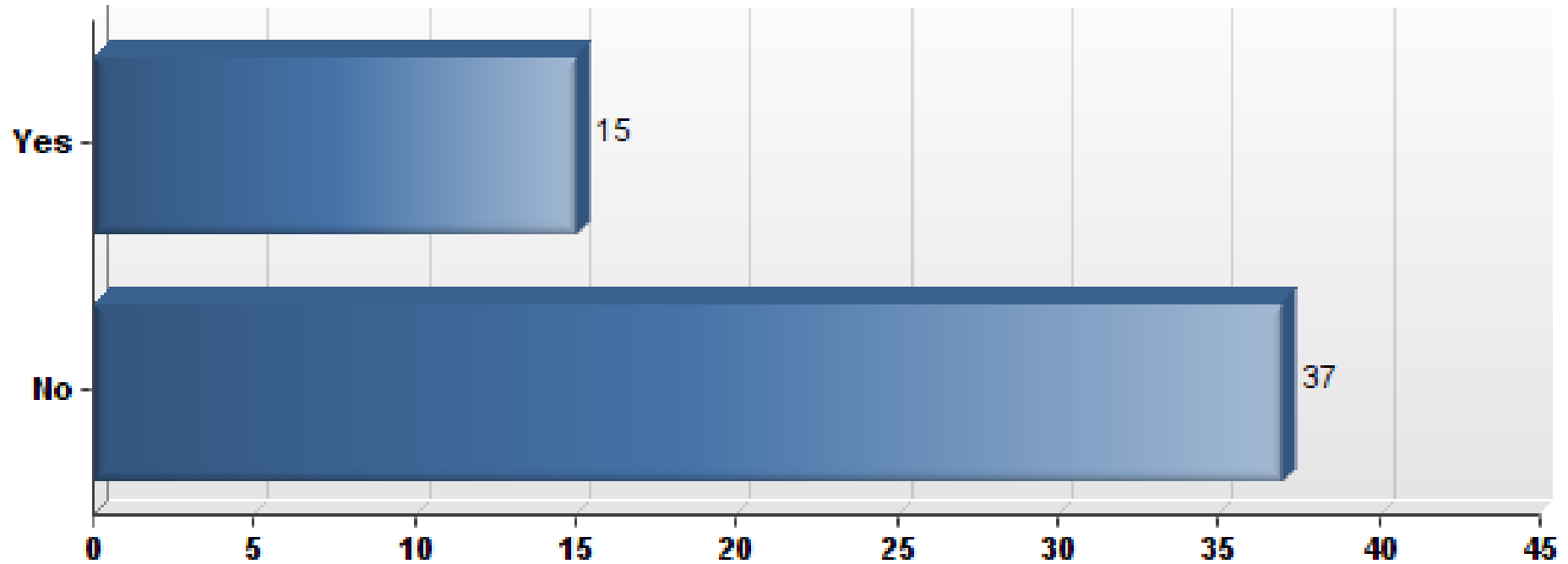
Academic rank



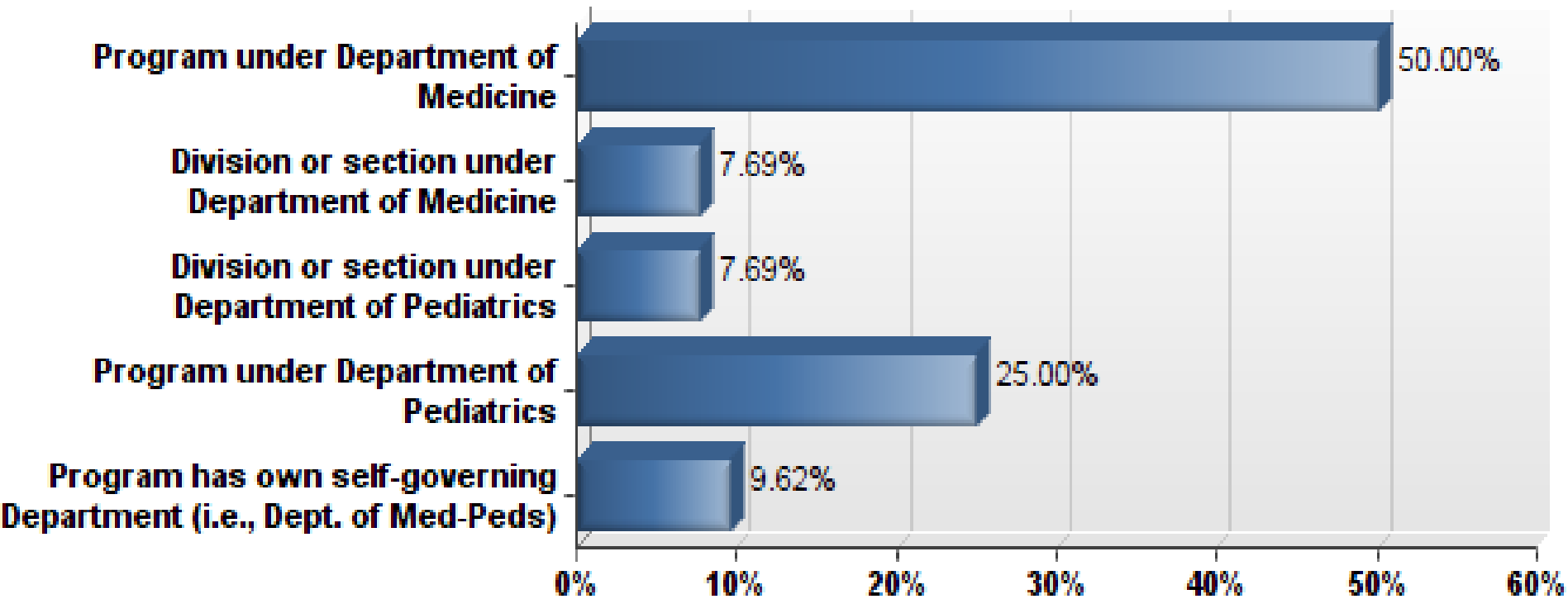
MP Program Director Salaries



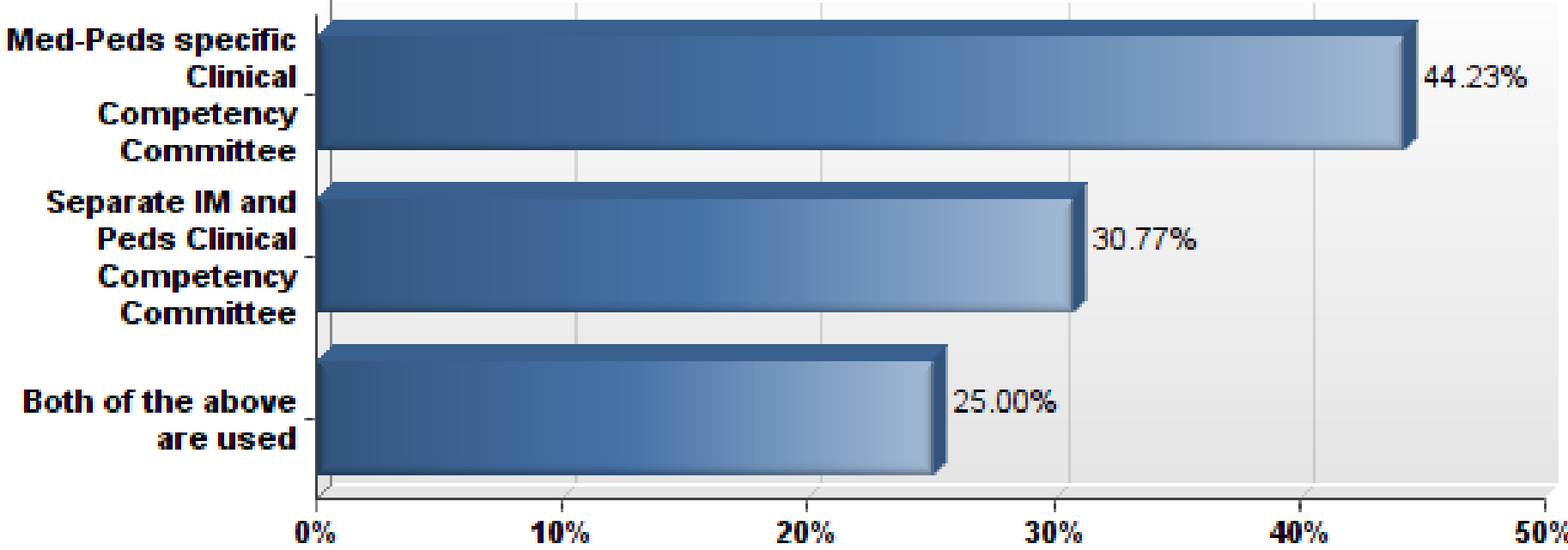
Do you have a separate Med-Peds division or section?



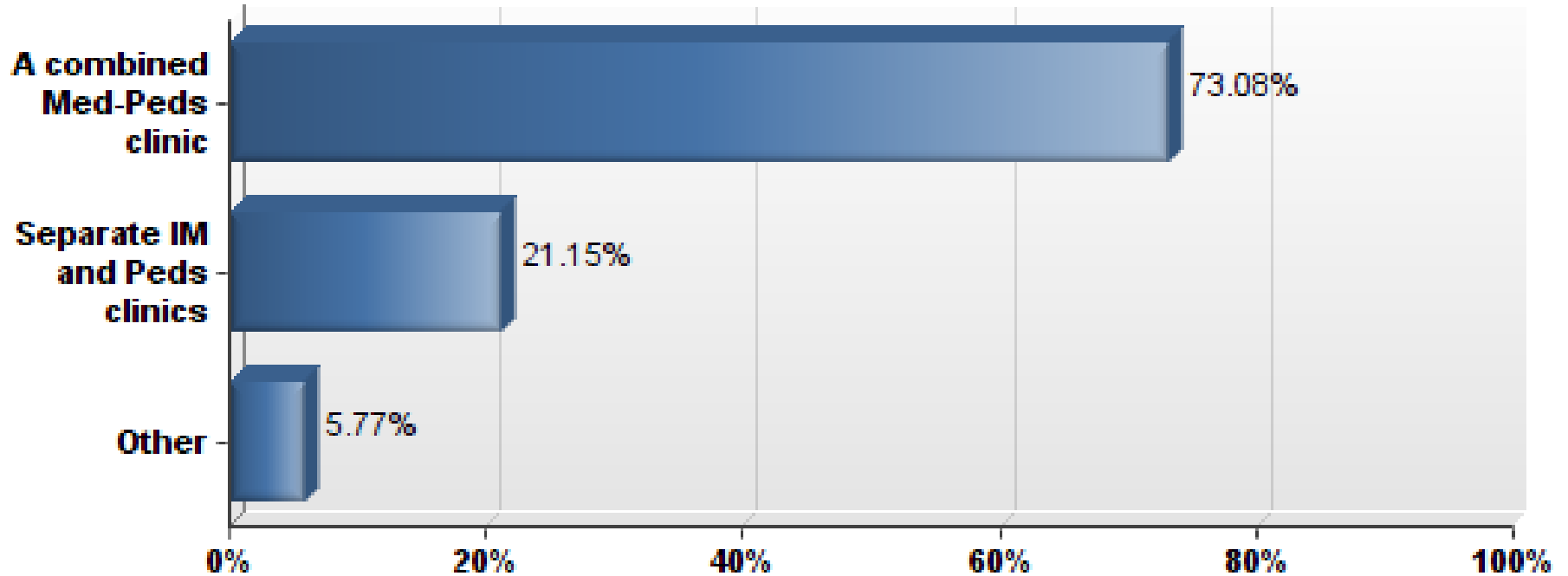
Academic governance of Med-Peds program



Clinical Care Committees



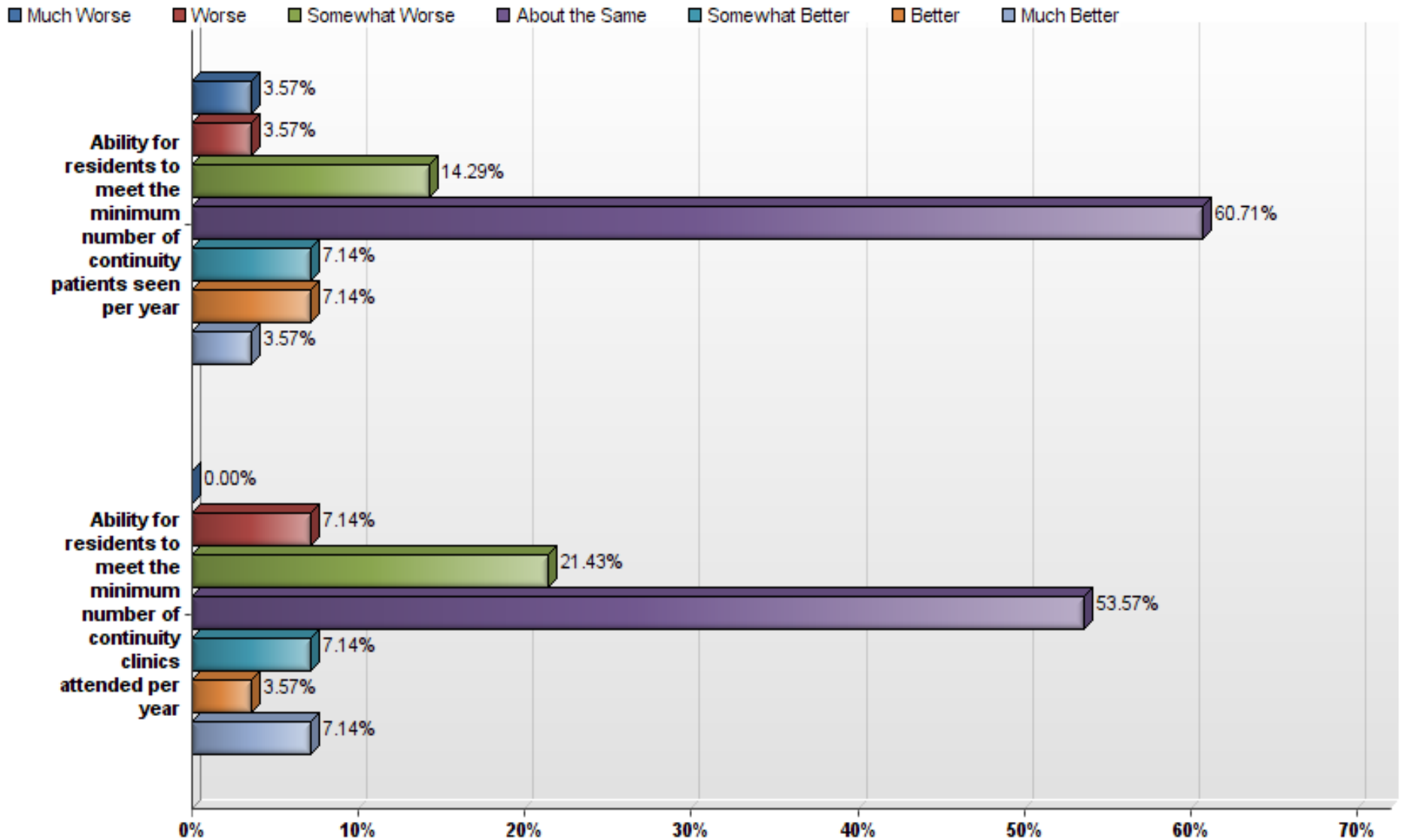
Med-Peds continuity clinic



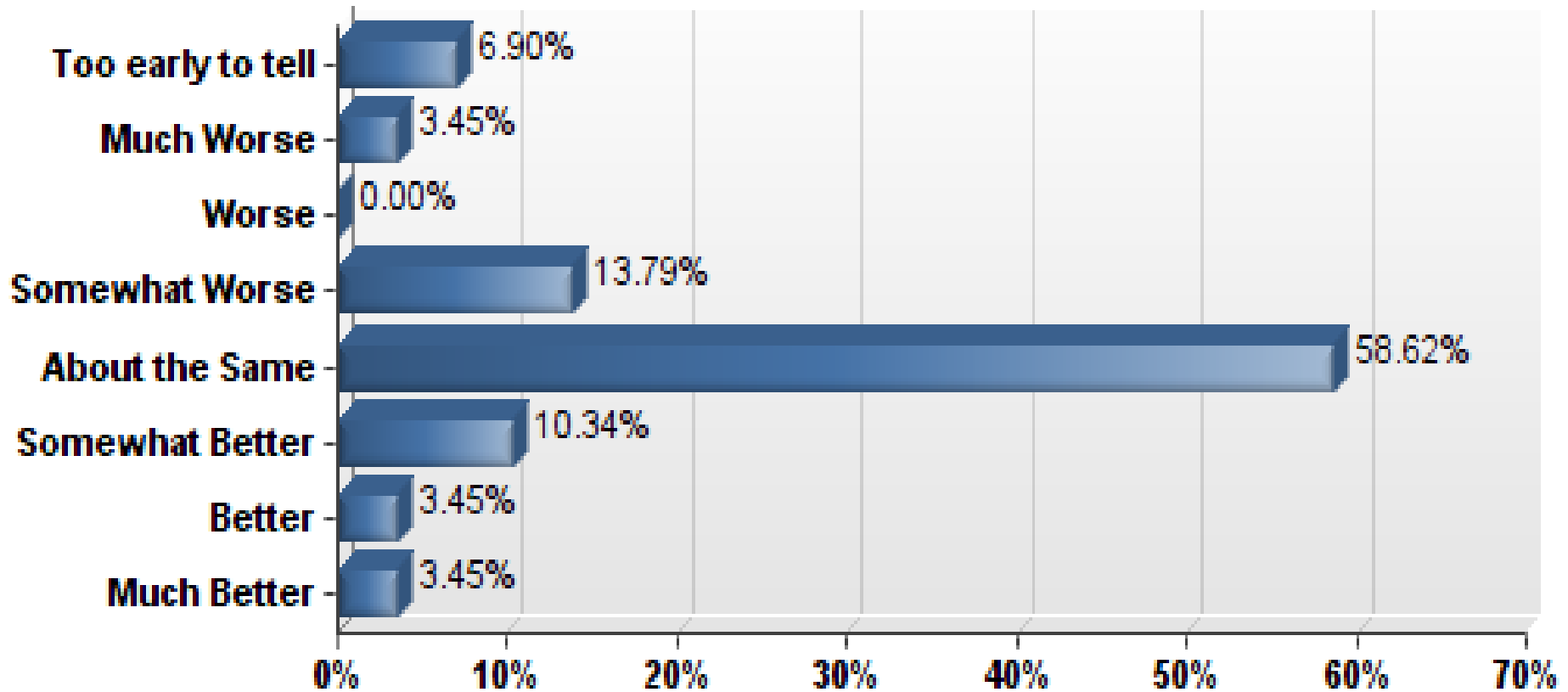
X+Y and Med-Peds

- Amongst 52 responses:
 - 31 have an X+Y at their institution
 - 11 of these 31 participate in the X+Y
 - 2 of the 31 also have X+Y in pediatrics

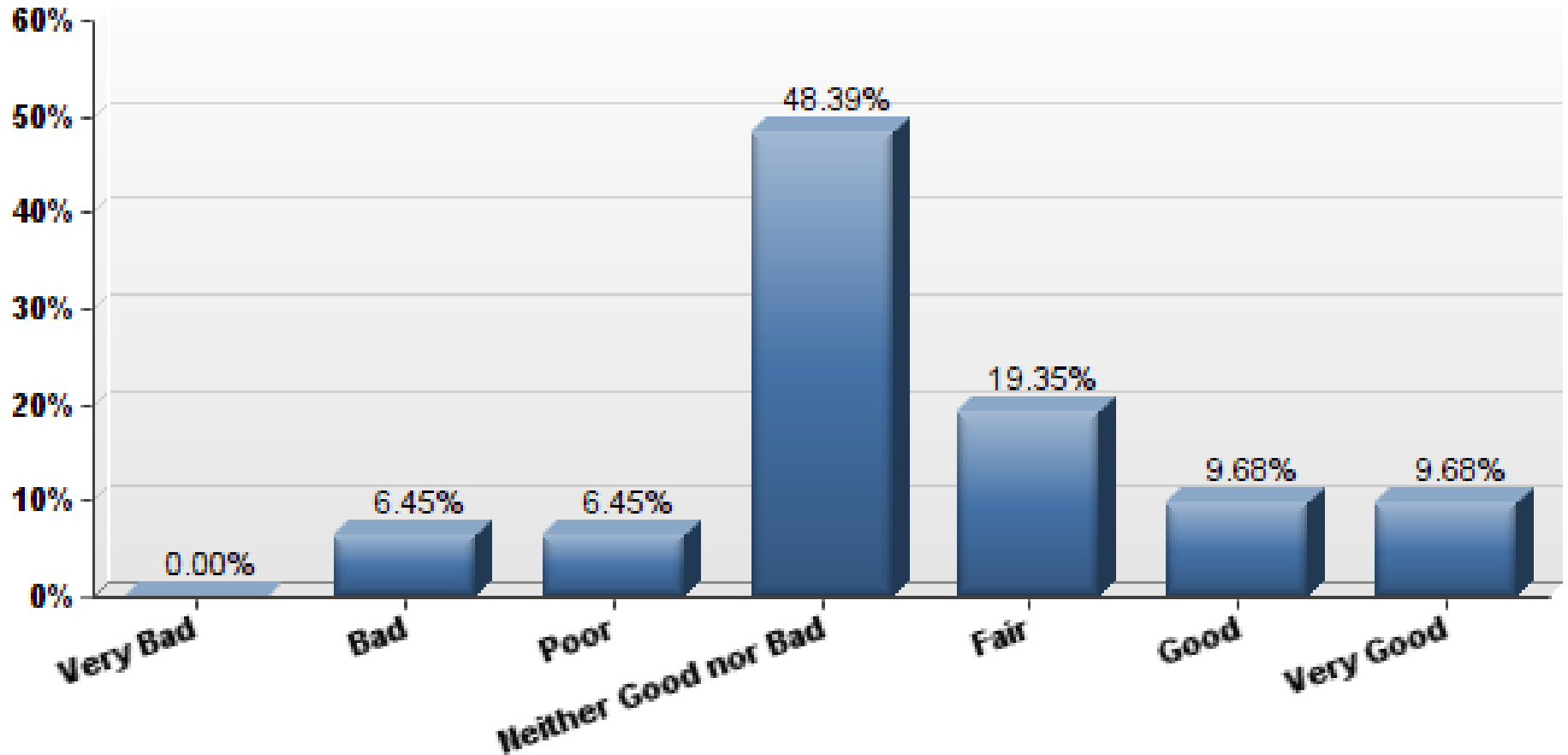
X+Y impact on Continuity Clinic requirements



X+Y impact on continuity with patients



Overall impact of X+Y on Med-Peds program



Call for Modules

- Submission form
 - research question
 - background
 - Limit of 10 questions
 - References
- Due November 1st for review by research committee
- Based on number of modules submitted, 2 to 3 will be included

“Denominator Project”

- Research committee has begun work on developing the survey
 - Baylor graduate survey
 - AAP Med-Peds workforce survey
 - MPPDA graduate survey
- Goal to have survey ready by the fall

Thank You!