

# Med-Peds Research Committee

Anoop Agrawal, MD

Alice Alexandar, MD

Michael Aronica, MD

Princess Dennar, MD

Robert Hopkins, MD

Russ Kolarik, MD

Jennifer Lindstrom, MD

John Stewart, MD

Steven Strausbaugh, MD

Richard Wardrop, MD

Ron Williams, MD

Sharon Wretzel, MD

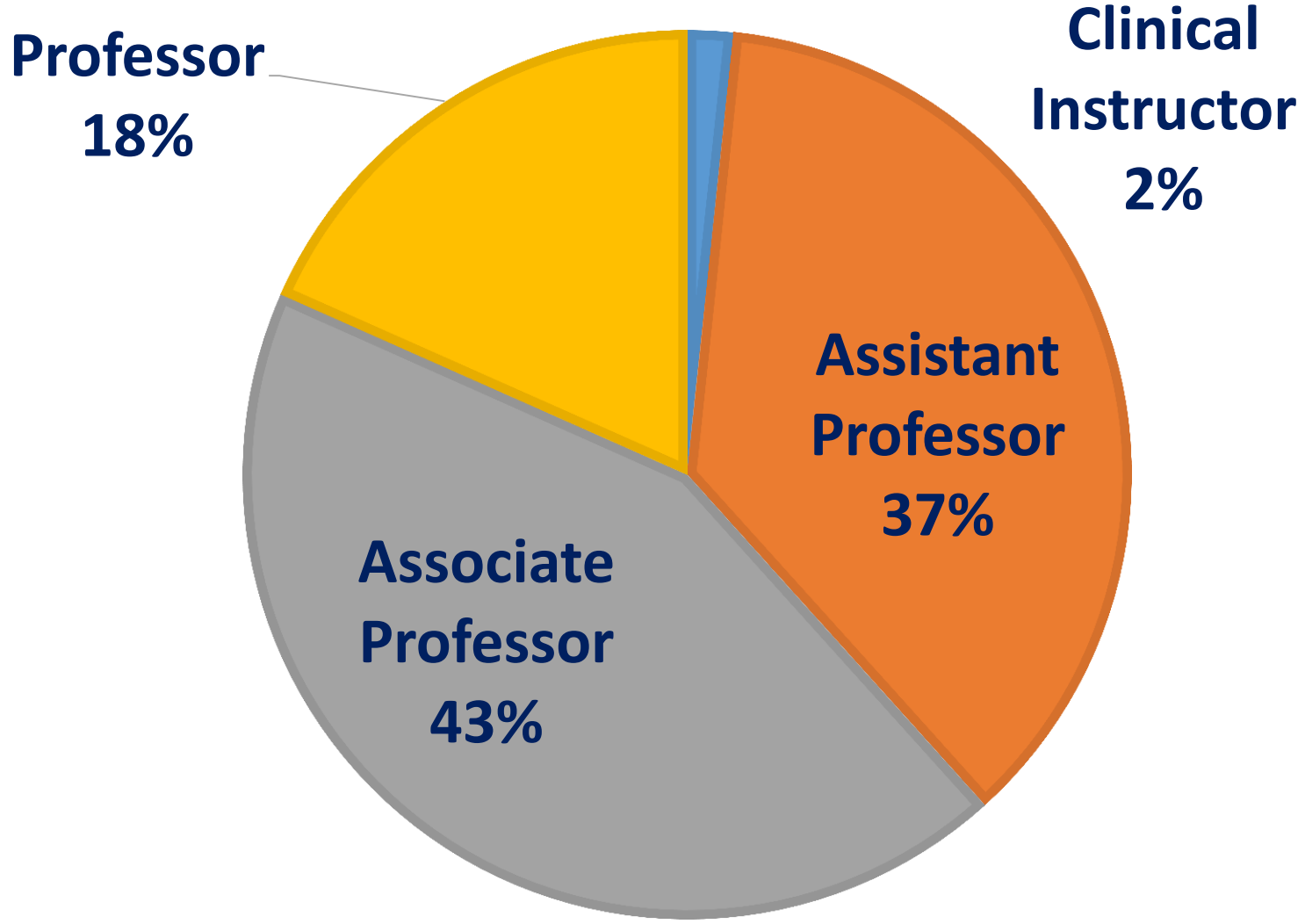
**MPPDA**

Medicine-Pediatrics Program  
Directors Association

# MPPDA Survey 2017

- 56 out of 78 programs (70% of programs)
- Survey conducted in Feb 2017
- 70-some questions, took on average 15-20 minutes.
- Core:
  - Program Characteristics
  - Program Assessment/Accreditation
  - Ambulatory Education
  - Graduates
  - Recruitment
- Modules:
  - X+Y
  - Burnout

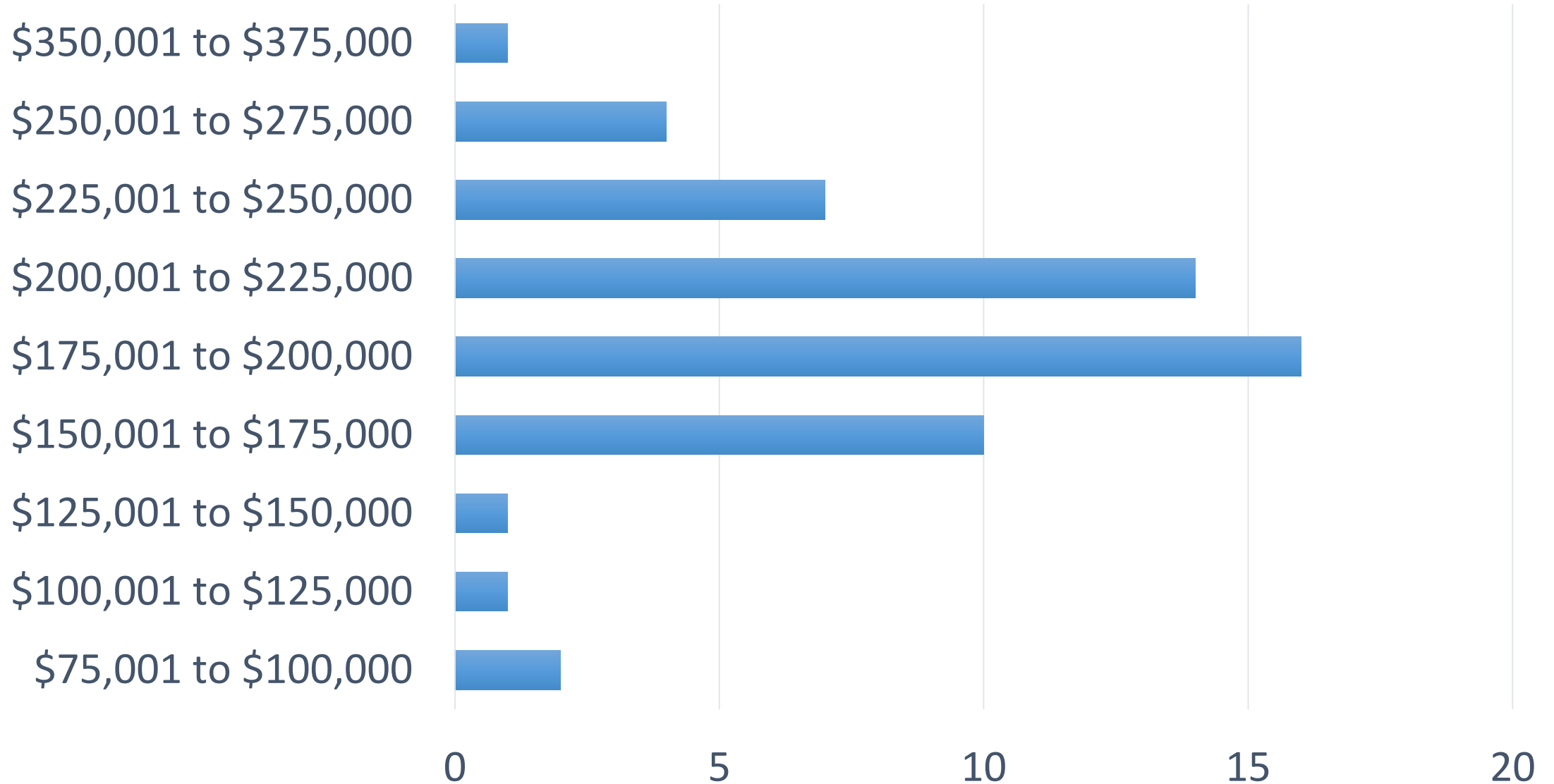
# ACADEMIC RANK



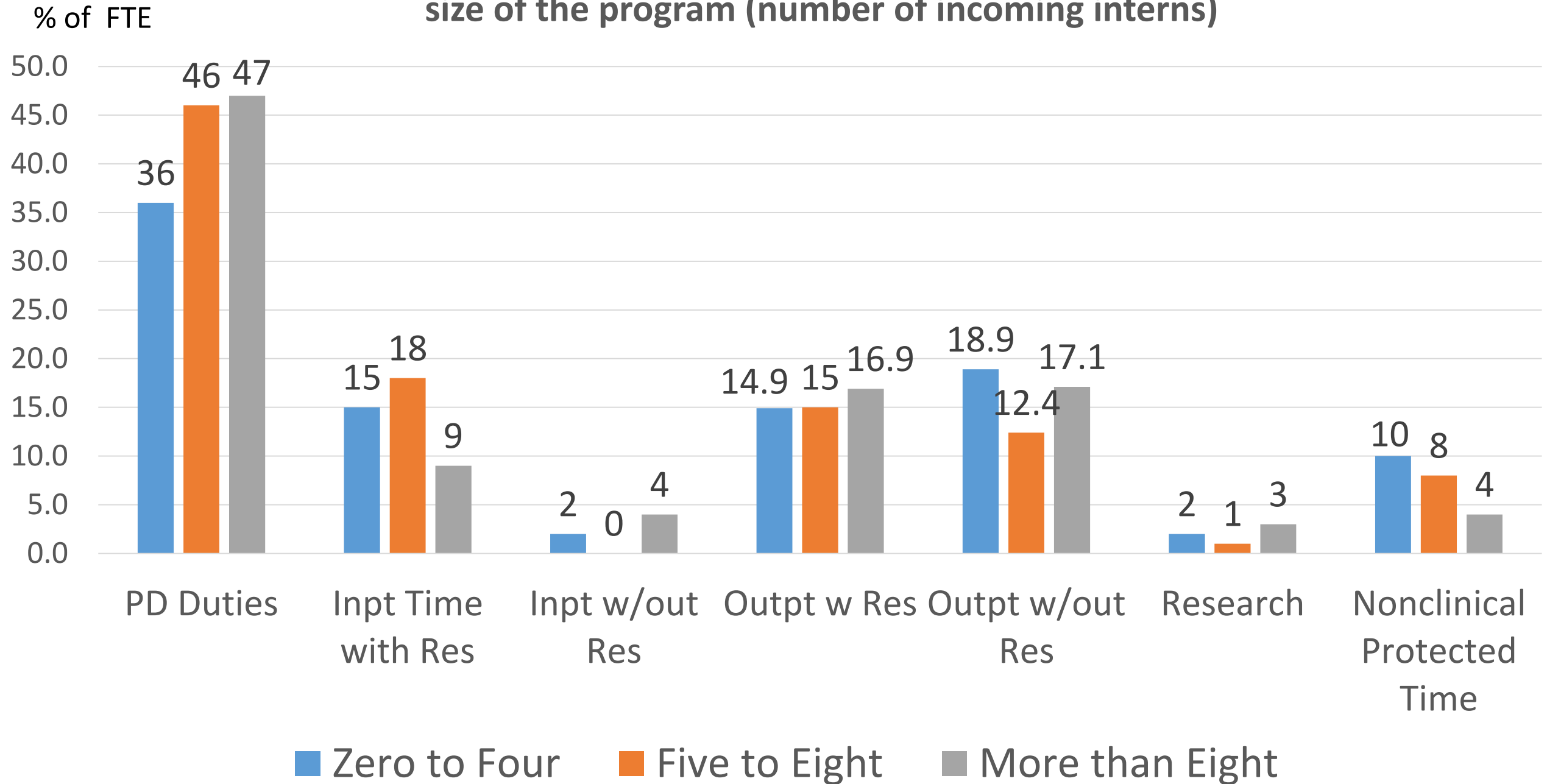
# Academic Rank vs. Sex

		What is your sex?		
		Male	Female	Total
What is your academic rank?	Clinical Instructor	0	1	1
	Assistant Professor	10	12	22
	Associate Professor	16	10	26
	Professor	7	4	11
	Total	33	27	60

# Program Director Annual Salary



**Percent of Program Director FTE allocated to various duties in relation to size of the program (number of incoming interns)**



APDs

# Number of APD positions based on program size

	Zero to Four	Five to Eight	More than Eight	Total
None	20.7	10.0	0.0	14.3
1	51.7	60.0	57.1	55.4
2	24.1	25.0	28.6	25.0
3	3.5	5.0	14.3	5.4
Total	100	100	100	100

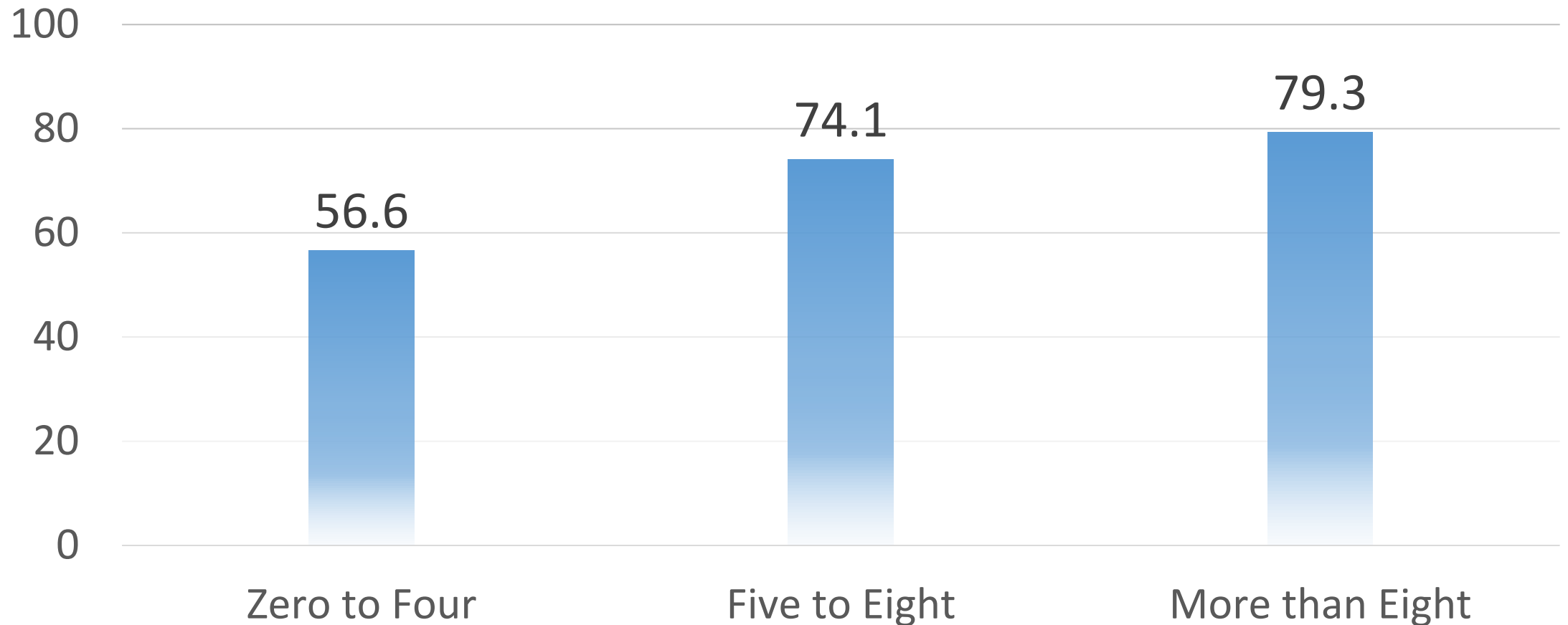


## What percentage FTE support does each APD have to perform his/her duties?

	Mean	Std. Dev.	Min	Max	Median
APD #1	16.3	8.5	0	33	20
APD #2	3.9	7.9	0	25	0
APD #3	0.2	1.6	0	10	0

# Program Coordinators

**PROGRAM COORDINATORS:  
% FTE DESIGNATED TO MED-PEDS IN  
RELATION TO SIZE OF INCOMING INTERN  
POSITIONS**

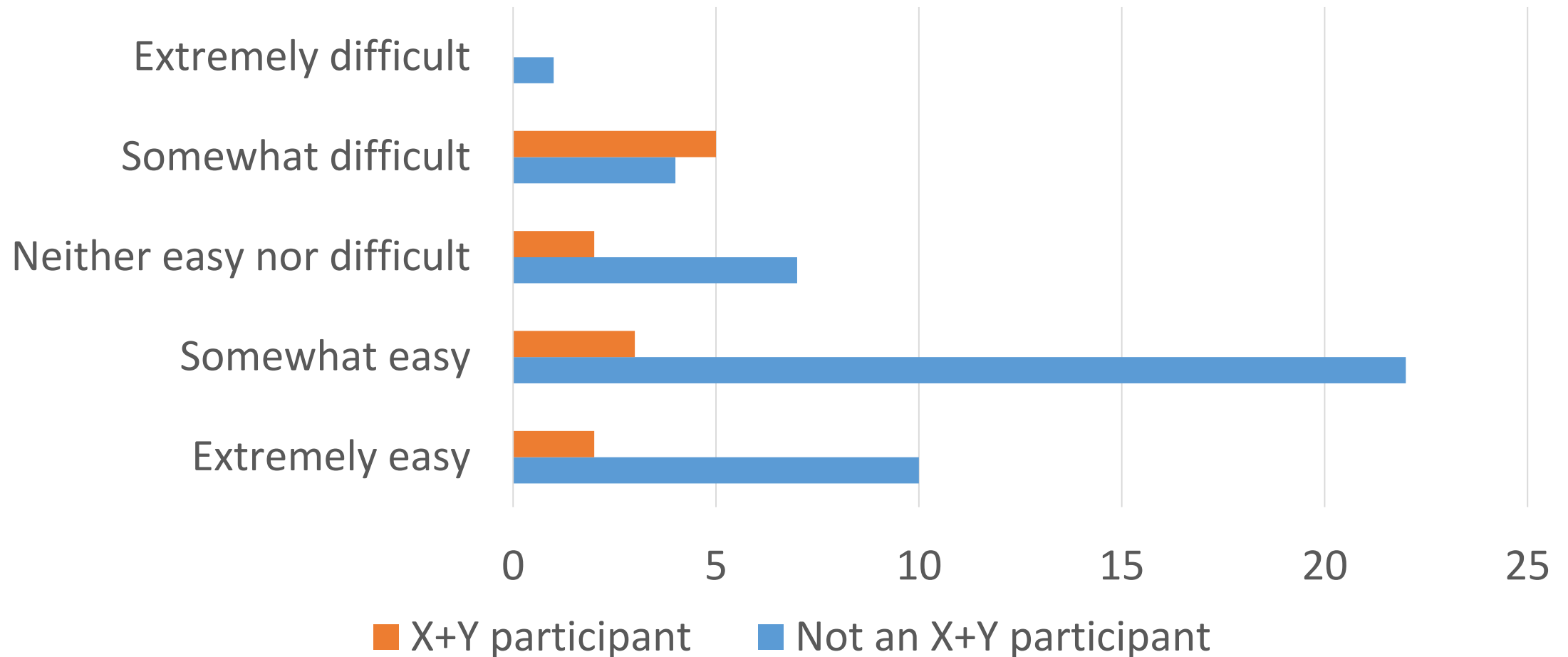


Graduates



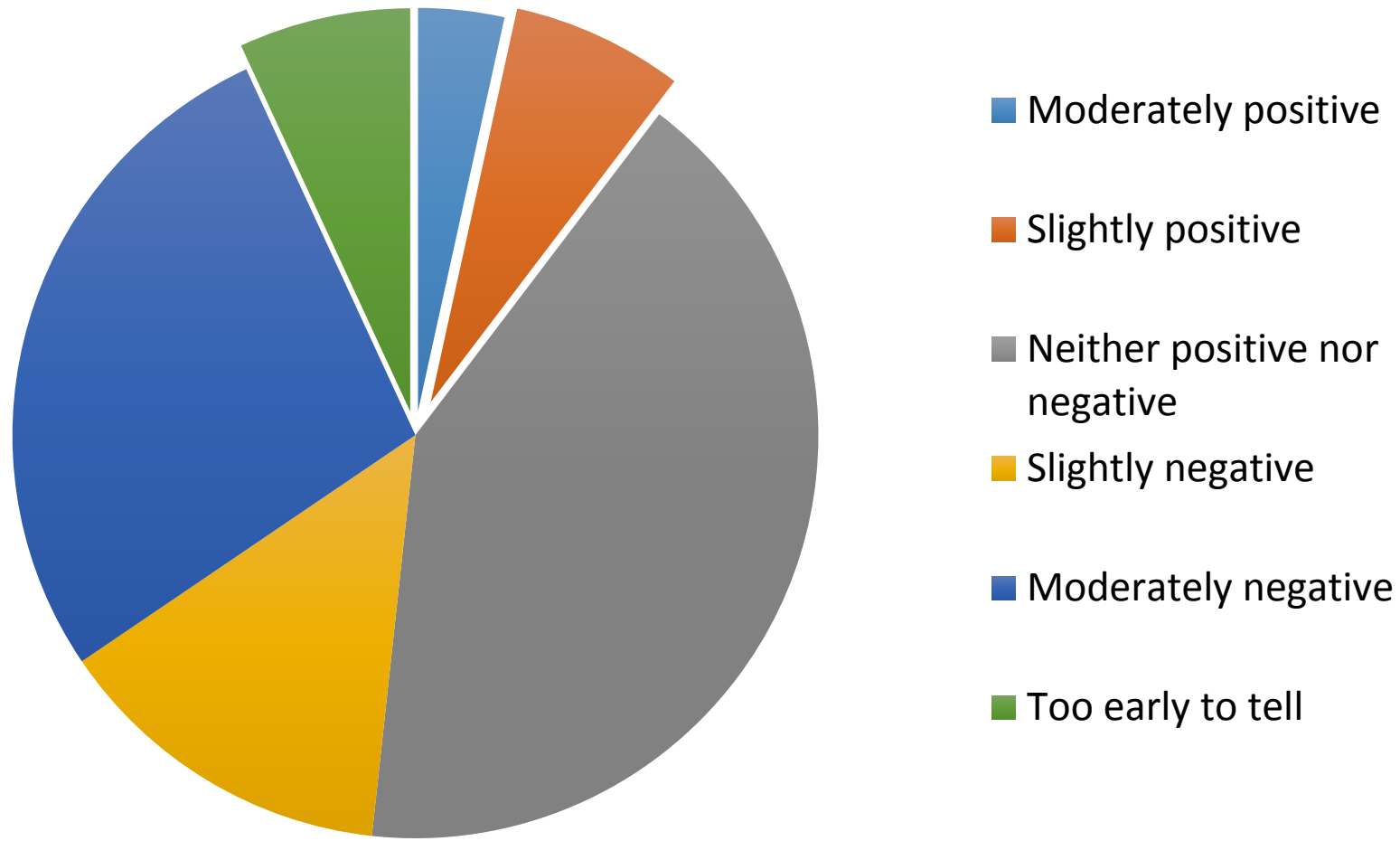
# Continuity Clinic

# Ease of meeting ACGME "Detail" for continuity clinic sessions over 26 weeks per year



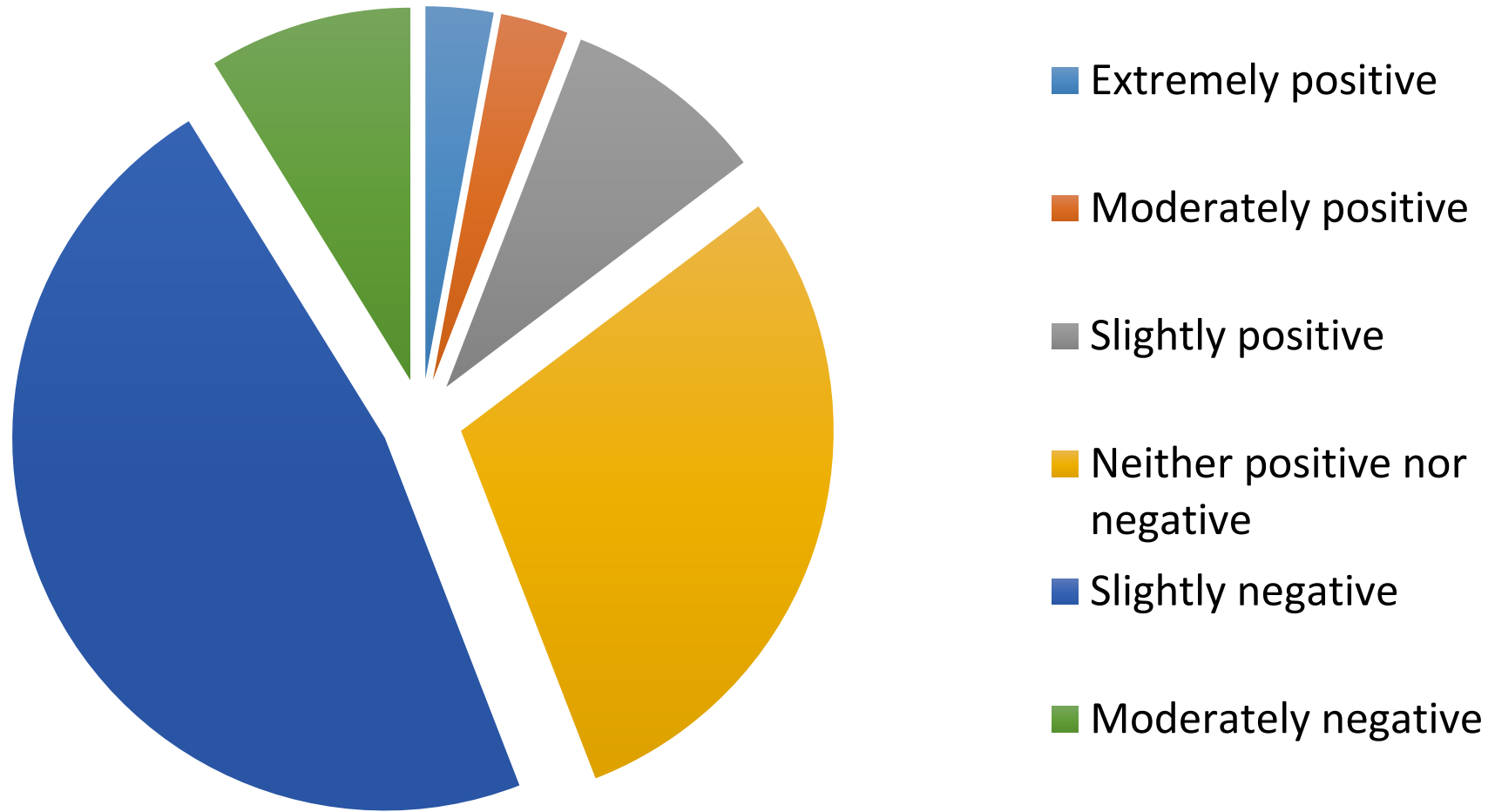
# X+Y Impact on Patient Continuity in Clinic

n=29 Programs





# Impact of X+Y on MP Program



# Comments on X+Y

n= 23

n	Topic	Positive	Negative	Neutral	Theme
8	Scheduling	1	7		Balancing 3 interrelated programs, different rules
3	Continuity	2	1		Volume and patient continuity
5	Culture		5		MP 'treated differently'
7	Concept	1	2	4	Current different rules for IM and PD= NEG impact on MP

My apologies if I may have interpreted your comments differently than you intended!!

RHH 3/28/17

# Committee action items

- Official call for survey question modules from the membership and committees.
- Development of manuscripts related to continuity clinic and X+Y
- Request for a program coordinator as liaison to serve on the research committee.
- Develop processes to maintain and add to graduate database going forward.

Thank You!